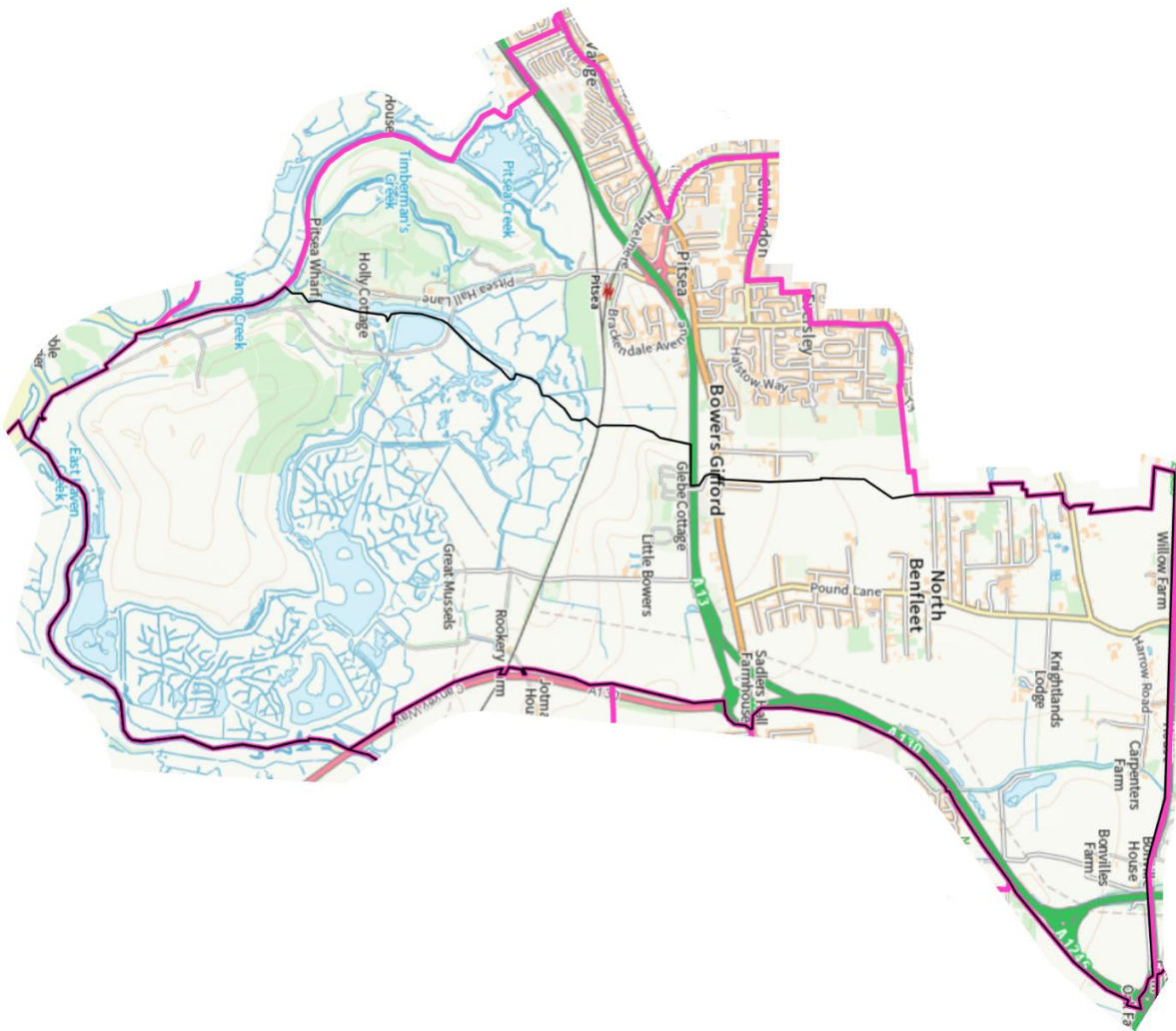


Appendix C

Conservative Party counter-proposal for the Eastern region

Split wards

<b>Constituency</b>	<b>Local authority</b>	<b>Ward code</b>	<b>Description of ward split</b>	<b>Electors</b>
Castle Point	Basildon	E05004031	Part of Pitsea South East (polling district DN)	1614
South Basildon and East Thurrock	Basildon	E05004031	Part of Pitsea South East (polling districts DO, DP, DQ and DR)	7339



Pitsea South East ward

Pink line: ward boundary. Black line: boundary of polling district DN.

Copyright Ordnance Survey